



ISO-MIX

A head in technology

IM 25B

IM 25B rotary jet head mixer

The patented ISO-MIX'er IM 25B is a rotary jet head mixer which provides efficient, hydraulically-balanced tank mixing within a short defined time period. It is also often used for effective gas dispersion.

Applications

The IM 25B is typically used in process and storage vessels from 100 - 5000 cubic metres (1000 - 30,000 barrels) primarily used in the petroleum industry, where fast, efficient mixing and/or gas dispersion in liquids is important. In the case of larger tanks or faster mixing requirements, several IM 25Bs are connected to the same pump to obtain the required performance. The ISO-MIX'er is most effectively used for mixing of liquids with a viscosity below 350 - 450 centipoise and containing no abrasive or fibrous materials. In order to optimize mixing time, gas dispersion and/or energy consumption, installation of additional ISO-MIX'ers should be considered.

Operation (see illustration)

The flow of the liquid to be mixed is recirculated from the tank via a pump to the ISO-MIX'er, which is properly positioned under the liquid surface. The liquid flow causes the nozzles on the mixer to perform an indexed simultaneous rotation around the horizontal and vertical axes.

When in-mixing smaller volumes into a large volume, the ISO-MIX'er is most effective if the liquid to be mixed into the larger liquid volume is added at the suction side of the pump, and in the case of gas dispersion, the gas to be dispersed in the liquid is most effectively injected on the pressure side of the recirculation pump.

Benefits

Using the IM 25B as a mixer makes it possible for the client, with a modest investment, to perform fast and effective mixing, with comparatively low energy input. The ISO-MIX'er eliminates the necessity of penetrating the tank wall with a rotating shaft, as required for traditional propeller mixers. Efficient temperature control is also much easier using ISO-MIX'er technology. When the tank is empty, the IM 25B may be used as a very effective automatic tank cleaner as well.

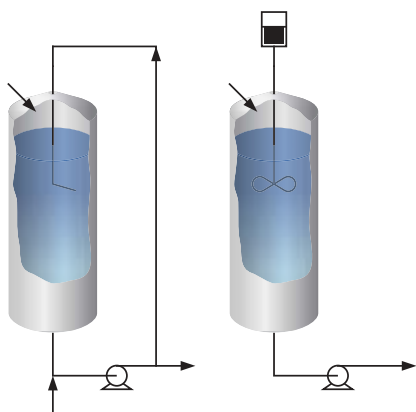
Quality systems

The IM 25B is manufactured in accordance with ISO 9001 standards.

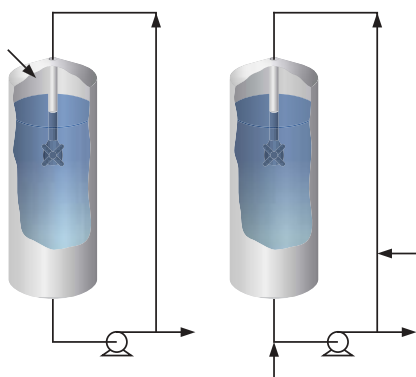
Ordering information

Please specify nozzle size, required connections and confirm application suitability.

Traditional mixing technology



ISO-MIX technology



ISO-MIX A/S

Baldershøj 28
DK-2635 Ishøj
Denmark

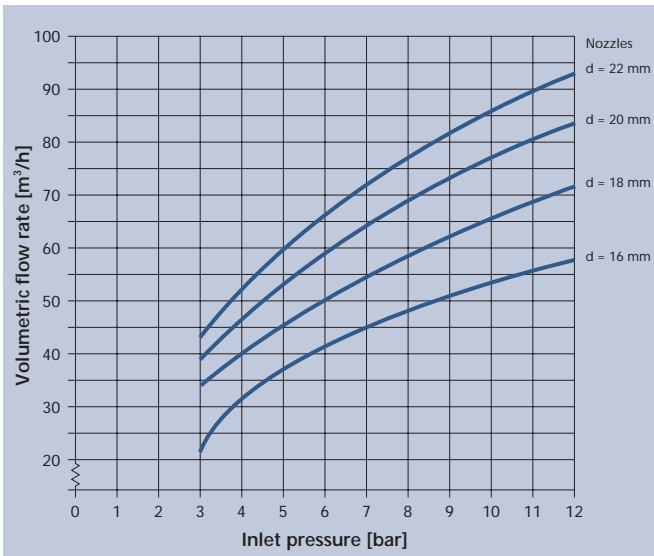
Ph. +45 43 30 31 00
Fax +45 43 30 31 01

www.iso-mix.com

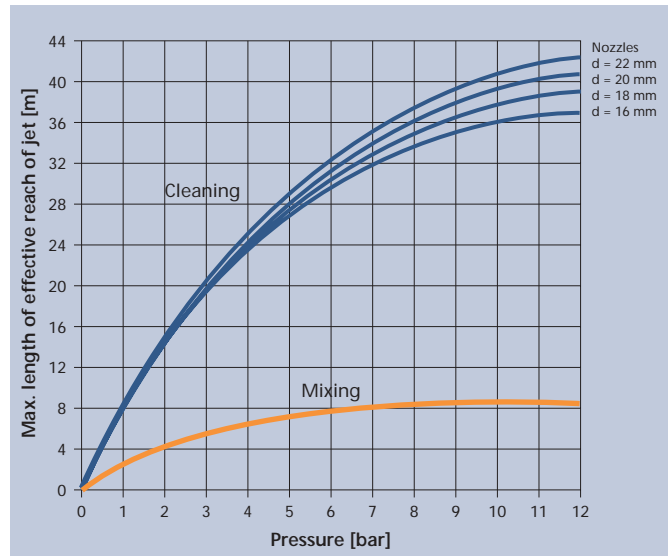


ISO-MIX

A head in technology



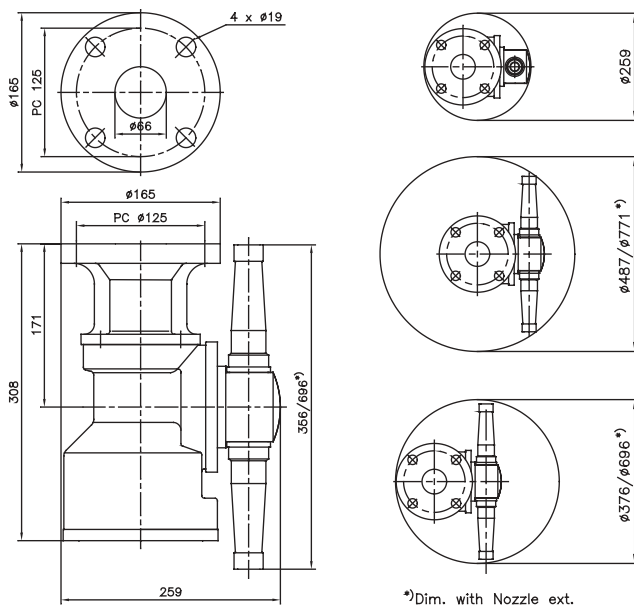
Flow Rate



Length

For **mixing** the effective reach of jet is dependent on a.o. viscosity, specific gravity of the liquid, the jet periphery velocity and the desired mixing time. For **cleaning** the effective reach is primarily dependent on jet periphery velocity and type of soilage.

Dimensions [mm]



Specifications

Materials Bronze, AISI 316L, PTFE, PVDF, Carbon, Tefzel, Ceramics

Weight 26.4 kg (58 lbs) fixed model

Lubricant Grease lubricated

Working pressure 3 - 12 bar (45 - 175 psi)

Recommended pressure 5 - 12 bar (75 - 175 psi)

Max. working temperature 130°C (270°F)

Max. ambient temperature 140°C (280°F)

Effective reach Mixing 6 - 9 m (18 - 27 ft.)
Cleaning 20 - 40 m (60 - 120 ft.)

Flange $\phi 165$ - PC125 - 4 x $\phi 19$ mm (0.75") holes

Min. required passage See dimension drawings